

---

---

# ◀ St. Luke's Voice ▶

---

St. Luke's Lutheran Church, New Rochelle, N.Y.

November 2023

## **St. Luke's Lutheran Church**

95 Eastchester Road  
New Rochelle, NY 10801

Rev. Cricket Cooper,  
Interim Pastor

**Sunday Worship:  
10 A.M.**

phone: (914) 632-2116  
StLuke654@aol.com  
SLNR.org

Visit us on Facebook!

**Newsletter**  
Editor: Pat Fredericks

As I look at the calendar month of November, I feel a sense of deepening calm. Labor Day to Halloween seem to be an all-out sprint, getting into the program or school year, going from beach-sleepy to office-ready in a nanosecond, watching as those luxurious, lengthy summer evenings sitting outside with friends and a beverage have given way once again to early-darkness, evening meetings, and first inkling of winter. Whether you are in school, working, or happily enjoying retired life, the months can feel hectic and hurried.

I don't mean to cast a gloom on the autumn gloom though, because I love the snuggliness of this season, I'm a big fan of cold weather and stormy nights, and I am energized by the shorter days. If you are the opposite, then I hope you will be enjoying the coming days in the forecast where it looks like the temps will be back around 80 degrees...!

As I look ahead, I see a month that begins with our annual remembrance of those we have loved and lost in this life. All Saints' Day is that chance to treasure the bonds of affection which even death cannot end.

**Names written on our hearts are there forever.**

Having remembered those who have gone before and given thanks mid-month for Veterans and their service and sacrifices, we turn to the kickoff of the Holiday Season: Thanksgiving.

You may still be celebrating this day as you have for decades, surrounded by family, enjoying traditional recipes passed down through the years, and gathering in the same grand old homestead where you have gathered over and over again.

Then again, things change. Perhaps this year you could gather a few of the NOT-so-usual suspects, and create a new tradition? Friends-giving can be a lovely, low-key version of the grand celebration, a place where you pick and choose which traditions to bring forward (tag football in the park and a jigsaw puzzle by the fire), and jettison traditions you are ready to release (any casserole topped with marshmallows, for example?).

However you celebrate the day, I pray for you a few days of rest and deep connection, a heightened sense of gratitude, and the knowledge that you are loved beyond words by the God who created you just as you are.

xoxoCricket+

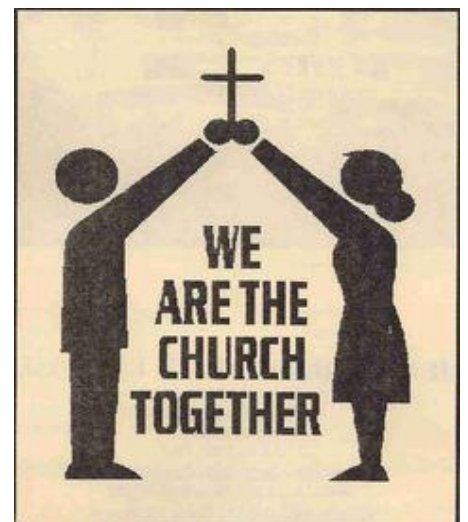
## REPORT FROM THE CHURCH COUNCIL

After the Congregational meeting in September with Holy Cow, Pastor Chris made several suggestions as to options we might want to investigate to increase the likelihood of receiving a Pastor. The Council is pursuing his suggestions. The first was to take a loan through the ELCA Mission Investment Fund to make the necessary repairs to the Church. We have been in contact with the Mission Fund and put together the required documents to file a preliminary loan request. This request is just to determine if we qualify for a loan and how much we could borrow. Traci Danielle, our Financial Secretary is spearheading the project and provided the historical financial information. Rich Tobin, our Council President has been working all year to identify the repairs needed for the Church and Parsonage. He has sourced from local licensed contractors estimates for the repair work. He, along with others on Council, created a comprehensive list of the repairs and costs. The repairs are **estimated** to cost, \$800,000 for the Church and \$290,000 for the Parsonage, totaling \$1,090,000. Of these, \$500,000 of Church repairs and \$215,000 of Parsonage repairs, are considered life/safety issues and need to be fixed in 2024. These are not repairs we can continue to defer. This report was submitted with the loan application. We hope to hear back on this in early November.

Another option that Pastor Chris mentioned was to investigate selling the Parsonage. We would sell it as is and raise funds for repairs needed in the Church. This would decrease the amount to borrow but would leave us with additional operating costs for Pastoral housing. We have spoken to a real estate agent to get an estimate of the current value of the house.

Finally, Pastor Chris suggested we look for innovative ways to use our building. We have the Nursery School, AA and a basketball group utilizing our facilities, but if any of you know of other groups looking for space that is appropriate for St Luke's, please let a council person know. None of this will happen quickly as the Synod has many churches in transition, and nothing will be done without congregational approval, so stay tuned.

This brings up the question of who owns the property. In accordance with the Constitution of the ELCA, St Luke's owns the church property, consisting of the Church and Parsonage. The Constitution states that if for any reason, a church closes or ceases to exist then the Church and any property it owns becomes the property of the Synod. Therefore, the upkeep and maintenance of the buildings is our responsibility.



In the past we have deferred maintenance on our buildings. We need to be better stewards of our properties, and you can help by pledging and contributing to the Property Fund.

(Continued on Next Page)

(Continued from Previous Page)

Through the end of September, the YTD net loss is \$(13,255). While the total income remains strong, we have experienced more expenses than income leaving us in this deficit position. With our Pastor moving to  $\frac{3}{4}$  time we may recoup some or all the loss, however, we have had year-end deficits in prior years (2018, 2020, 2022). Each time this occurs we must use monies in our savings. As of September 30<sup>th</sup>, we have a total of \$72,452 of cash and savings. We need to work on building a bigger reserve, and not using it for operating expenses. We hope to have more information from the Synod and the Loan Fund by our next meeting so we can begin to formulate a plan to move forward.



In the meantime, what can you do? Prayerfully consider your support of St Luke's for the upcoming year. In 2013 we received 40 pledges totaling \$153,552. In today's dollars that would be \$202,890. For 2023 we received 23 pledges totaling \$127,348. Expenses continue to rise at a comparable rate, so we need everyone's financial support as well as talents to continue to be the St Luke's we all love.

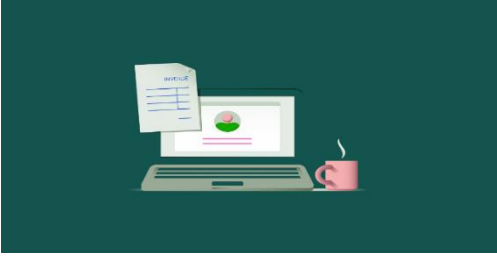
## COOKING FOR HOPE

Our team this month included Pat, Leam, Bill, James, Ken, and Denise. Angelika was off today but spent Friday morning shopping for the ingredients with Joan. We made a total of 14 trays filled with sausage, peppers, onions, and white rice.



The next Hope Cook is November 19<sup>th</sup>, and all are welcome to lend a hand!

## CAN YOU HELP?



We are looking for a few people who can help update and maintain our website. No experience with web design necessary, though knowledge of Word Press is a plus. Training will be provided. For more information, please contact Susanne Kuligowski at [Susanne.kuligowski@gmail.com](mailto:Susanne.kuligowski@gmail.com).

## BOOK CLUB CORNER

Our Book Club met October 26<sup>th</sup>, at Barnes & Noble in Scarsdale, to discuss the novel *ANXIOUS PEOPLE* by Fredrik Backman. We welcomed a couple of new members and dined al fresco while enjoying sharing our viewpoints on this poignant, charming novel about a crime that never took place, a would-be bank robber who disappears into thin air, and eight extremely anxious strangers who find they have more in common than they ever imagined.

Please consider joining us. We meet monthly – location TBD.

Upcoming dates and book selections are:

November 16, 2023, Thursday --- *Tom Lake* by Ann Patchett

December 14, 2023, Thursday --- *Small Things Like These* by  
Claire Keegan

January --- TBA --- *I, Julian* by Claire Gilbert

We welcome new members! For more information contact Jennifer Archer by email: [ktembo@aol.com](mailto:ktembo@aol.com) or [stluke654@aol.com](mailto:stluke654@aol.com).



SAVE THE DATE:

ST. LUKE'S ANNUAL  
BUDGET MEETING  
DECEMBER 3<sup>RD</sup>



# HAPPY THANKSGIVING

## from the Fellowship Committee

We pray you are all well and enjoying the beautiful, yet rainy, fall season.



We had a wonderful time at Koinonia at our Family Retreat. There was hiking and boating, crafting, pumpkins, worshiping and singing. Everyone pitched in to make it truly a community. Our Women's Retreat is planned for April 12<sup>th</sup>. Please save the date!

The Holiday Boutique is Nov 4<sup>th</sup>. Please share the flyer – it's on the next page!!! This is our largest fundraiser, and we need all the support we can get! Bring your

rummage, your new items, jewelry, baked goods, yourselves, and your friends! Set up is the 3<sup>rd</sup> and clean-up is the 4<sup>th</sup> and the 5<sup>th</sup>. PLEASE sign up to help with clean up on the 4<sup>th</sup> at 3pm. It will only take 1 hour of your time. Sign up will be in the Narthex.

We are looking forward to the holidays and our many volunteer opportunities! Our Food drive ends on Oct 29<sup>th</sup> but we will continue to collect. For those who are willing to donate, there is a large bin in the Narthex. Also this month we will be collecting coats and warm weather accessories, gloves, hats, scarves for all sizes and genders through Nov 19<sup>th</sup>. The box will be in Narthex.



In December we will be collecting new unwrapped toys for the children of HOPE ages 0-12. We will place them under the Christmas Tree December 3<sup>rd</sup> and 10<sup>th</sup> and HOPE will pick them up. Please see flyers! We hope to be able to go caroling again this year. We'll keep you posted. December 19<sup>th</sup> is the Sunday School Pageant during service and our Congregational Christmas Party immediately thereafter. We hope you can all attend.

If you are on Facebook, please join our page. "St. Luke's New Rochelle". Please visit our Website at SLNR.org. Thank you to our committee and all those with the time and talents to support our mission of unity and oneness in Christ. Our church is an amazing family because we are all part of it.

*Yours In Christ*

Dawn McEvoy email: [Mmcevoy33@aol.com](mailto:Mmcevoy33@aol.com) cell: 347-604-3969

Committee members: Julia Ungewitter, Angelika Ridulfo, Leam, Melissa and Vicky McEvoy, Susanne and Jacob



\*\*\* SAVE THE DATE \*\*\*

*November 4, 2023*



# *Holiday Boutique*



**St. Luke's Lutheran Church**  
**95 Eastchester Road, New Rochelle**  
**10 am to 3 pm**

**RUMMAGE SALE**  
**RAFFLES!!!**

*New Holiday Merchandise*  
*Christkindl Booth, Handcrafted Items*

*Avon, Mary Kay*  
*Paparazzi & Parklane Jewelry*  
*Gifts & Books/Media*

*Bake Sale, Tastefully Simple*  
*Have Lunch at the CAFÉ !*



*Come support our beloved 154 year old church. Ask for a tour! Visit our website: [SLNR.org](http://SLNR.org)*



## ONE WARM COAT®

One warm coat can  
change a life...

Of a child

Of a man

Of a woman


*Can you imagine what two can do??*

Drop off in Narthex by Nov. 19, 2023

Please join us in helping to keep those in need warm this winter by donating a  
coat, hat, scarf or gloves, new or gently used,  
To HOPE Community Services in New Rochelle.

Please drop off to St Luke's Church by November 19<sup>th</sup>.  
There will be a collection Bin in the Narthex.

Please contact Dawn McEvoy with any questions at [mmcevoy33@aol.com](mailto:mmcevoy33@aol.com)



***Turkeys for HOPE***

***Please donate \$20 towards***


***Providing a Turkey or Ham (12-15 lbs)***

***for a Family in need***

***This Thanksgiving***

***Or any amount towards a turkey or ham. Leave cash***  
***or check in basket in Narthex by November 19<sup>th</sup> on***  
***Harvest Home Sunday.***

***Checks may be made payable to "St. Luke's Church"***  
***Memo "Turkeys for HOPE".***



**THANKS  
GIVING**

www.CreativeCertificates.com



# THE SUNDAY SCHOOL WISHES YOU A HAPPY & BLESSED THANKSGIVING

We continue welcoming guests and new students to the Sunday School. If you would like to register, or if you have not registered yet, please do so by contacting Dawn McEvoy. All children aged 3 to High School are welcome. We have wonderful teachers that are all Sunday School grads including ME!



November and December are very busy months for us... November we start with our Annual Holiday Boutique on Saturday, Nov. 4<sup>th</sup>. PLEASE come support our biggest fundraiser of the year. Donate your time, SHOP, come and have lunch... BUY A RAFFLE TICKET!!! Every little bit helps. See the flyer in this newsletter and share it with your family, friends and neighbors!

December we will have our Toy Drive for Hope, possibly Caroling this year at the Wartburg and of course our Pageant and Congregational Christmas Party on Dec. 17<sup>th</sup>. See flyers enclosed.

All students should have their own envelopes to use for Sunday donations. We like to teach children the importance of tithing at an early age and your donations help us to do all the things we do for the Sunday School: their lessons, supplies, crafts, gifts, pageants, costumes, parties... We ask that all children use their envelopes; if the children do not have them, we will provide them. Please help to support the Sunday School with your contributions.

Congratulations to our 3 children who made their First Holy Communion: Olivia Connor, Nicholas Grody and Cait Elser. So proud of them!

God Bless you and your families.... Hope to see you all Sunday!

Please visit our website and Facebook pages.  
[www.Slnr.org](http://www.Slnr.org) and [@slnr.org](https://www.facebook.com/slnr.org)



*Thanksgiving*  
**blessings**  *Gatherings*  
**GRATEFUL** *Family*  
*Give Thanks* **Prayers**  *Blessed*  
*Let us come before Him*  
*with Thanksgiving*  
*Psalms 75:2*

Yours in Christ,  
Dawn McEvoy – Superintendent;  
Email: [mmcevoy33@aol.com](mailto:mmcevoy33@aol.com)  
Karen Fontecchio – Asst. Superintendent  
Traci Daniele – Treasurer  
Teachers – Melissa McEvoy, Vicky McEvoy,  
Shari Taylor and Jacob Kuligowski





# HOPE

COMMUNITY SERVICES

## Holiday TOY DRIVE

**OCTOBER 24 - DECEMBER 5**

*Help Bring a Little Joy to Over 550 Local Children  
Newborn - 12 Years*

**Accepting Donations Monday - Friday 10AM - 3PM**

---

**Drop-off Location:** HOPE Community Services  
50 Washington Avenue  
New Rochelle, NY 10801

Your gift of a new unwrapped toy will be distributed on December 15, 2022

---



Amazon Wishlist

*For more information contact:*  
*Sylvia B. Hamer*  
*(914)380-9716*  
*Shamer@hope-cs.org*



Donate Your Way



*St. Luke's Lutheran Church*

***ANNUAL  
Congregation Christmas Party***

***Dec 17<sup>th</sup>, 2023***

*In the Fellowship Hall immediately following  
Service and Sunday School  
Christmas Pageant*

~

*Continental Breakfast*

*Caroling*

*Visit from Santa*

~

*Beautiful Handmade Glass Gifts for Sale by  
Martha Johnson - all proceeds to be donated to the  
Sunday School*

***All are welcome!***

*Please RSVP to [mmcevoy33@aol.com](mailto:mmcevoy33@aol.com) or  
sign up in the Narthex.*

## AROUND THE PARISH



**In Our Prayers** this month are those hospitalized, with health concerns, or in transition or treatment, and all those in our Sunday prayers.

## NOVEMBER BIRTHDAYS & ANNIVERSARIES

A decorative graphic featuring six balloons in a row. From left to right, the colors are green, purple, orange, purple, orange, and green. Each balloon has a small black string attached to its bottom.

# Anniversary & Birthday List

### Birthdays

11/4	Brett Buehrer	11/11	Steven Olsen, Jr.
11/5	Kasandra Triolo		Timothy Guido
	Colin O'Garro	11/15	Mason Dassler
11/6	Irene Breen	11/21	Martin Ungewitter
11/7	Corey Shelukindo	11/22	Rosalind Carter
11/9	Traci Daniele	11/28	Patricia Tobin
		11/29	Alexandra Archer-Palmeri

### Anniversaries

11/4	Walter & Elizabeth Mitze
11/6	Alexandra & Joseph Palmeri
11/10	Henry & Christina Bast, Jr.
11/20	Susan & Christopher Forsberg



# St. Luke's Lutheran Church – November 2023

Sun	Mon	Tue	Wed	Thu	Fri	Sat
<b><u>All Sundays</u></b> 9a-Choir Rehearsal 10a-Choir 10a-Sunday School 11a-Coffee Hour			1 10a-Prayer Group	2	3 <b>6p- Holiday Boutique Setup</b> No Boy Scouts	4 <b>Holiday Boutique 10a-3p</b> <b>3p-Rummage Cleanup</b> No A.A. Men's Group <b>Daylight Saving Time Ends turn clocks back 1 hour</b>
5 <b>All Saints Sunday</b> 10a-Worship 10a-Sunday School <b>Holiday Boutique Cleanup after Worship</b> 11a-Coffee Hour, Host: Sunday School <i>Daylight Saving Time Ends</i>	6 7p-Basketball Group	7	8 10a-Prayer Group	9	10 <i>Office Closed</i> 7:15p-Boy Scouts	11 <b>Veteran's Day</b> 9:30a-A.A. Men's Group
12 10a-Service of the Word with Deacon Renee Taylor 10a-Sunday School 11a-Coffee Hour, Host: Sr. Choir	13 7p-Basketball Group	14 7p-Church Council Mtg.	15 10a-Prayer Group	16 12:30p-Book Club at Barnes & Noble	17 7:15p-Boy Scouts	18 9:30a-A.A. Men's Group
19 10a-Worship 10a-Sunday School 11a-Coffee Hour, Host: Church Council 11a-Cooking for HOPE	20 10a- HOPE Food Pickup 7p-Basketball Group	21	22 10a-Prayer Group	23 <b>Thanksgiving</b> <i>Office Closed</i>	24 <i>Office Closed</i>	25 9:30a-A.A. Men's Group
26 <b>Christ the King &amp; Loyalty Sunday</b> 10a-Worship 10a-Sunday School 11a-Coffee Hour, Host: Social Ministry	27 7p-Basketball Group	28	29 10a-Prayer Group	30		

**Thank you to the Patrons of St. Luke's Voice –**

Jennifer Archer	Art Rankis
Traci Daniele	Aija Sears
Lorraine Helfer	Nancy Sigler
Walter Glatz	Bob Maresca
Ernest & Rosalind Wallace	

Patrons are those who wish to make a gift to help support the publication of St. Luke's Voice.

To become a patron, just make a contribution of \$25.00 send to St. Luke's Lutheran Church, 95 Eastchester Rd., New Rochelle, NY 10801. Please designate the gift toward "Patron of Newsletter".